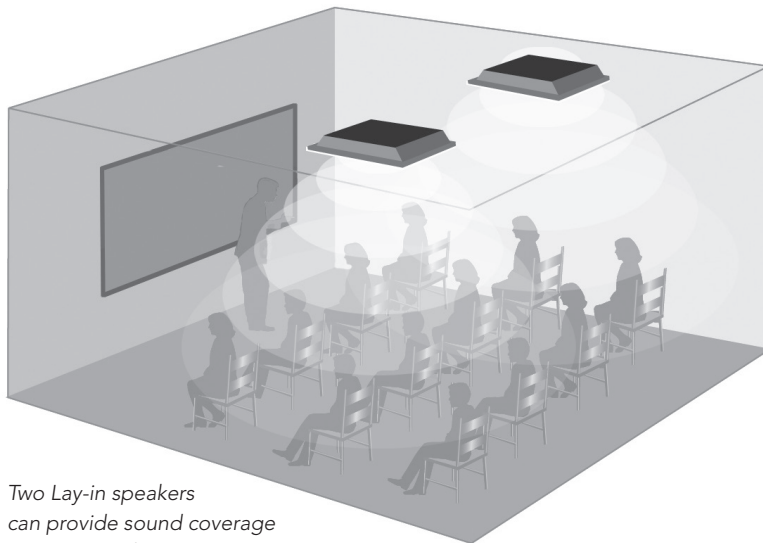


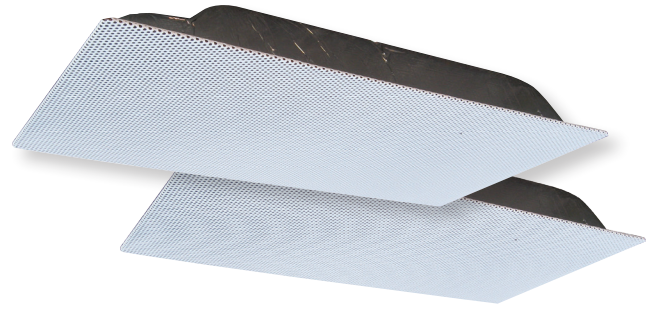
Lay-in Ceiling Speakers

These easy-to-install speakers blend in with drop ceiling tiles for a finished look, and provide great sound quality and dispersion. With only two speakers per classroom, achieve a blanket of sound over the classroom that's perfect for voice, music, and video program material.

SP-L Lay-In Speaker Kit includes (2) 1ft x 2ft speaker assemblies with molded fiber enclosure and white perforated steel grill, (2) 2ft finishing T-bars, (2) 60ft plenum-rated speaker cables, and (2) support cables for a complete installation.



Two Lay-in speakers can provide sound coverage to an entire classroom.



Key Benefits

- Great sound coverage
- Cable clamp is included
- Mounts flush with ceiling for neat installation
- No assembly required



Specifications

Average sensitivity: 92dB-SPL 1W/1M

Loudspeaker power rating: 12W-RMS EIA 426A Standard

Calculated maximum system output: 103dB-SPL, 12W/1M

Magnet type: 4.8oz BeFe Ceramic

Size (WxHxD): 30 x 60.4 x 9.7cm/11.81 x 23.81 x 3.81 in

Impedance: 8 Ohm

Frequency response: 65Hz – 17kHz EIA 426A standard

Nominal coverage angle: 100° included angle -6dB/2kHz half space

Audio connection: Pre-cut 17.8cm/7in color-coded leads

UL Listed 1480, UL Listed 2043